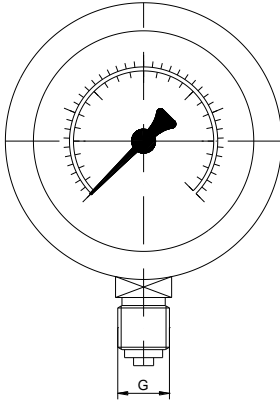
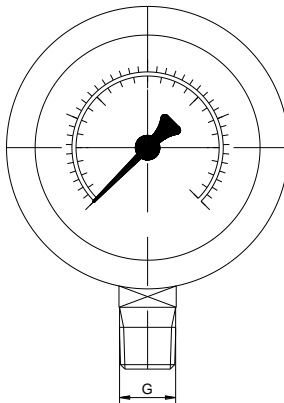


**Manometer, glyzeringefüllt, Anschluss unten, Gehäuse aus Chromnickelstahl, Skala in bar**



G	Druckstufe	Nenngröße	Artikelnummer
G 1/4 A	10 bar	63	1-982-01-01-050
G 1/4 A	16 bar	63	1-982-01-01-060
G 1/4 A	25 bar	63	1-982-01-01-070
G 1/4 A	40 bar	63	1-982-01-01-080
G 1/4 A	60 bar	63	1-982-01-01-090
G 1/4 A	100 bar	63	1-982-01-01-100
G 1/4 A	160 bar	63	1-982-01-01-110
G 1/4 A	250 bar	63	1-982-01-01-120
G 1/4 A	400 bar	63	1-982-01-01-130
G 1/4 A	600 bar	63	1-982-01-01-140

**Manometer, glyzeringefüllt, Anschluss unten, Gehäuse aus Chromnickelstahl, Skala in bar/psi**



G	Druckstufe	Nenngröße	Druckstufe	Artikelnummer
1/4 NPT	10 bar	63	145 psi	1-982-01-21-050
1/4 NPT	16 bar	63	230 psi	1-982-01-21-060
1/4 NPT	25 bar	63	360 psi	1-982-01-21-070
1/4 NPT	40 bar	63	580 psi	1-982-01-21-080
1/4 NPT	60 bar	63	870 psi	1-982-01-21-090
1/4 NPT	100 bar	63	1450 psi	1-982-01-21-100
1/4 NPT	160 bar	63	2300 psi	1-982-01-21-110
1/4 NPT	250 bar	63	3600 psi	1-982-01-21-120
1/4 NPT	400 bar	63	5800 psi	1-982-01-21-130
1/4 NPT	600 bar	63	8700 psi	1-982-01-21-140